



Beautiful **BRUCE PENINSULA**

GUIDEBOOK

Catch your breath

www.brucepeninsula.org



Learn more about starting or expanding your business in Warton-The Bruce Peninsula's Basecamp or Retro Sauble Beach



Town of
SOUTH BRUCE
PENINSULA

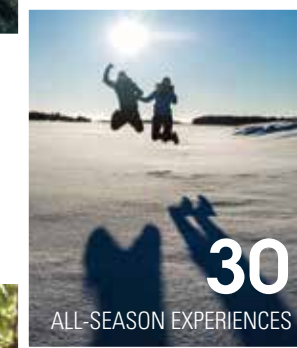
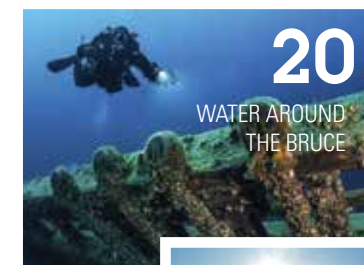
Tel: 519-534-1400 Ext 120
Email: tsbpdepclerk@bmts.com
Website: www.venturehere.ca

Have you been dreaming of starting your own business and are unsure of where to start? Venture here and explore all that the Warton Base Camp and Retro Sauble Beach areas have to offer. Located between the shores of Lake Huron and Georgian Bay we are becoming a hub for business ventures and a unique breed of entrepreneurs. Market access, skilled workers, room to grow and community supports are just a few of the reasons which make building a new life and business in the Town of South Bruce Peninsula so inviting.

*Explore the basecamp for
your business vision!*



CONTENTS



FINDING YOUR WAY

- 5 Orientation
- 6 Top Tips for Visitors

COMMUNITIES

- 8 Warton, Hope Bay
- 10 Sauble Beach, Red Bay
- 12 Lion's Head, Ferndale, Stokes Bay
- 14 Tobermory, Miller Lake

EXPLORING

- 16 National Parks
- 18 Beach & Shoreline Activities
- 20 Water Around the Bruce, Fishing
- 22 Natural Bruce, Wildflowers, Birding

P24-25 CENTRE PAGE MAP SECTION

- 26 Exploring by Foot, Hiking
- 28 The Human Footprint
- 29 Art & Culture, Lighthouses

EXPERIENCES

- 30 All-Season Experiences
- 32 Experience Adventure
- 34 Camping & Cottaging

BUSINESS MEMBERS DIRECTORY

- 36 Dining & Shopping
- 37 Professional Services
- 38 Recreation & Outdoor Pursuits
- 41 Cottages & Cabins
- 42 Campgrounds
- 44 Bed & Breakfasts
- 44 Motels, Inns & Resorts

P46 CALENDAR OF EVENTS

P47 CHI-CHEEMAUN SCHEDULE

Have you ever wondered
what makes toys go?



May 18 to September 4, 2017

Peek inside some popular toys! Explore linkages, cams, pulleys, and circuits ... win at Operation®, find out what makes a Jack-in-the-box jump, see behind the screen of an Etch A Sketch® and more!

*Exhibit on loan from the Montshire Museum of Science.
Tour managed by Sciencenter.*

Proudly presented by **ONTARIO POWER GENERATION** 1017

brucemuseum.ca
33 VICTORIA STREET NORTH, SOUTHAMPTON
ONTARIO, 519.797.2080, 1.866.318.8889

**BRUCE COUNTY
MUSEUM
& CULTURAL CENTRE**
ARCHIVES • HISTORY • EVENTS

MAKERS OF THE GUIDEBOOK Who We Are

PUBLISHER

Beautiful Bruce Peninsula is published annually by the Bruce Peninsula Tourist Association:

2928 Highway 6, Ferndale
P.O. Box 150, Lion's Head,
Ontario N0H 1W0
Ph/Fax 519-793-4734
www.brucepeninsula.org
info@brucepeninsula.org



MEMBERS

Special thanks to BPTA's members and sponsors, whose participation and membership make publication of this guidebook possible.

WRITERS

The articles and text have been compiled from current and past board members and associate organizations who call the Bruce Peninsula Home, year round.

PHOTOGRAPHERS

First, our thanks to all those who submitted photos for consideration. We've kept them on file. If you don't see one of yours this year, keep your eyes peeled in future editions! To contact any of the photographers, email the publisher.

COVER PHOTO – GAIL PORTER

Sauble Beach, South Bruce Peninsula

Photo of Sauble Beach was taken in December 2015. Gail has retired from her role as owner/operator of Lakeside Motel in Sauble Beach. Photo was shot on a Olympus Tough TG-4 camera.

LAYOUT AND GRAPHIC DESIGN

Melissa McLean, MM Graphic Design Services
519-477-3807 or melissamymclean@gmail.com
www.mmgraphicdesignservices.com

NEXT ISSUE

Advertise or participate in next years Guidebook by contacting Catrina prior to October 1st, 2017 at the BPTA office 519-793-4734 or Bluewater Travel 519-534-2671.

Photographers - please submit digital photos to info@brucepeninsula.org (High resolution min. 300 dpi)

ORIENTATION

The Bruce Peninsula starts when you venture north of Highway 21, from Southampton in the West, to Owen Sound in the East.

From south western Ontario or the Toronto area you have choices that avoid 400 series highways and include back-road variations.

From the GTA; For the main route, follow Highway 10 from Brampton north towards Owen Sound where Highway 6 & 10 converge. Continue through Owen Sound either via 10th Street from downtown or the Rockford bypass via Springmount. Continue on Highway 6 through Shallow Lake, Hepworth and arriving into Wiarton, basecamp to the Bruce Peninsula.

From Sarnia and the west. Follow Highway 21 via Goderich, Tiverton, Port Elgin, towards Southampton, turning north west onto Bruce Road 13 towards Sauble Beach and beyond.

From Kitchener-Waterloo area. Follow Bruce Road 10 from Hanover to Scone and then straight up the Grey Bruce line towards Hepworth.

The Bruce Peninsula WELCOMES YOU

Excerpt from the 1979 Bruce Peninsula Guidebook

Bruce Peninsula is an 80 kilometre stretch of vacation land between Lake Huron and Georgian Bay. It's the lakeside and the country. But no matter where you are on the Bruce, you are never more than 7 miles from the water.

Practically an Island we have 1000 miles of shoreline. Room enough for you to find your own special place; a hidden cove with a sandy beach; a tiny village hugging the cliffs; a bustling town, social centre for people of the land and the water. A naturalists and photographers paradise, the Peninsula offers many wild orchids and flowers, their beauty only rivalled by the 140 species of birds that visit here.

Still true today, the Peninsula is a playground for the many tourists, seasonal and permanent residents enjoying the nature, water, beaches, trails, flora and magnificent views from the cliffs of the Niagara escarpment.



TOURISM CENTRES

FERNDALE PARK & INFORMATION CENTRE

2928 Highway 6, Ferndale,
519.793.4734

SAUBLE BEACH

www.saublebeach.com
www.visitssaublebeach.ca
519.422.2457

SPRINGMOUNT INFORMATION CENTRE

Owen Sound Transportation,
519.376.6601

TOBERMORY INFORMATION CENTRE

Tobermory Community Centre,
519.596.2452

WIARTON VISITOR CENTRE

www.visitwiarton.ca
519.534.3111

REG PHILLIPS

TOP TIPS for Visitors

CORY LAYCOCK

PUBLIC WASHROOMS

Canadians are well-known coffee shop customers. They have washrooms (as do most gas stations). But please respect their policies if they state washrooms are for customers only.

Portable toilets or seasonal facilities are often located on popular trails, beaches, parks, conservation areas, etc.

TOBERMORY

- Visitor Information Centre (Community Centre)
- Parks Canada Visitor Centre
- Tobermory Harbour
- Concession Stand/ Ball Diamond
- MTO Yard

LINDSAY ROAD 5

- Municipal Office

FERNDALE

- Information Centre (north of Ferndale crossroads)

LION'S HEAD

- At the beach

WIARTON

- by the Municipal Office parking lot (Berford & George Streets)
- Campground washroom

HEPWORTH

- Coffee shop
- Service station

SAUBLE BEACH

- 6th Street washroom on the beach

SPRINGMOUNT

- Owen Sound Transportation Visitor Information Centre
- Georgian Bluffs Municipal Office

IMPORTANT

9•1•1 SERVICE

Use it for police, fire, accident, medical emergencies, etc.

GREEN FLASHING LIGHT IN VEHICLES

Volunteer firemen on the way to an emergency situation

WILDLIFE ON THE ROAD

This can be a hazard! Exercise caution especially when driving at dusk or dawn.

KNOW WHERE YOU ARE AT ALL TIMES

If you don't have a GPS, plot your progress on the map. We give you that advice for two reasons: because it will increase your enjoyment (and help you find your way back to places you would like to revisit), and because emergencies can erupt any time, any place.

MUNICIPAL INFORMATION

FIRE PERMITS

Northern Bruce Peninsula - Fire permits are \$5.00 and can be purchased at the following locations;

Municipal Office – 56 Lindsay Road 5, Lion's Head 519-793-3522

By the Bay – 817 Pike Bay Rd – 519-793-3317

Ferndale Drive Inn – 2867 Highway 6, Ferndale 519-793-3311

Hoppy's One Stop – 7384 Highway 6 – 519-596-2486

Much More Camping – 7405 Highway 6, Tobermory 519-596-2000

Roadside Convenience – 2875 Highway 6 – 519-793-3810

Roxy's – 6313 Highway 6 – 519-596-8300

Scott's Home Hardware – 73 Main St, Lion's Head – 519-793-3446

South Bruce Peninsula - If you would like to apply for a burn permit, contact the Town of South Bruce at 519-534-1400, 310 George Street, Wiarton, ON. or email to tsbpfd@bmts.com. The cost is \$10.00

FIREWOOD

All campgrounds/cottages do not permit outside firewood. Buy local wood and burn locally, do not take it home.

WASTE DISPOSAL

Please help keep the Bruce Green and Clean by using the waste disposal and recycling locations

MUNICIPALITY OF NORTHERN BRUCE PENINSULA

SUMMER HOURS	Eastnor	Lindsay	St. Edmunds
Monday	12PM–4PM		8AM–12PM
Tuesday	12PM–4PM		
Wednesday			12PM–4PM
Thursday		12PM–4PM	
Friday		12PM–4PM	
Saturday	8AM–4PM		8AM–4PM
Sunday		12PM–8PM	

MUNICIPALITY OF SOUTH BRUCE PENINSULA

1249 Sauble Falls Parkway - (between Oliphant and Sauble Beach)

June 15 to Labour Day

Tuesday to Saturday 8:30 am – 5:00 pm

(closed Noon – 1:00 pm)

Sunday 1:00 pm - 5:00 pm

(bagged garbage and recycling only - no heavy material)

Monday 10:00 am - 2:00 pm

ST. EDMUNDS BRUCE PENINSULA MUSEUM

- SCHOOLHOUSE
- LOG CABIN
- LOCAL HISTORY

Tour inside a century old log cabin where early settlers raised their families.

Located 3km South of Tobermory
7072 Highway 6

Open Daily July & August

11:00am - 4:00pm

Open Weekends

Victoria Day to Thanksgiving

Admission by Donation

STEP BACK IN TIME
AND EXPLORE THE
HERITAGE OF THE
NORTHERN BRUCE
PENINSULA PIONEERS

www.northbrucepeninsula.ca

(search) "museum"

Municipal Office 519.793.3522

Museum 519.373.7032



WATER REFILL STATIONS

Potable water refill stations can be found in Tobermory and Lions Head. Reduce the number of plastic bottles used, take your own water bottle!

Welcome to
BRUCE PENINSULA!
I hope you enjoy your stay

Contact our office for questions regarding:
- Passports
- Veterans Affairs
- Canada Revenue Agency (Income Tax)
- Citizenship & Immigration
- Employment Insurance
- Canada Pension Plan
- Old Age Security

LARRY MILLER, MP
BRUCE-GREY-OWEN SOUND

LARRY.MILLER.C1@PARL.GC.CA 519-371-1059 WWW.LARRYMILLER.CA

BILL WALKER, MPP
Bruce-Grey-Owen Sound

920 1st Ave West
Suite 100
Owen Sound, ON
N4K 4K5

bill.walkerco@pc.ola.org
www.billwalkermpp.com

519-371-2421 or
1-800-461-2664

Warton

AREA HIGHLIGHTS

- Beach & Playground
- Bruce Trail
- Picturesque Harbour
- Shopping
- Spirit Rock
- Warton Willie

VISITWIARTON.CA



BASECAMP TO THE BRUCE PENINSULA

TOWN OF SOUTH BRUCE PENINSULA

Nestled against the towering bluffs of the Niagara Escarpment, Warton is a thriving four seasons community.

Founded in 1894, Warton is the largest community within the amalgamated municipality of The Town of South Bruce Peninsula. Warton is the largest centre on the Peninsula, and a significant place both currently and historically. It sits at the western end of Colpoys Bay, one of the most beautiful scenic bays on the Great Lakes, cradled on all landward sides by the cliffs of the Niagara Escarpment.

In the past Warton was an important regional centre for water and rail traffic. The trains have gone, but all roads and all trails still pass through. The high-tech and low-tech ends of the transportation spectrum are well represented by the airport south of town and the famous Bruce Trail.

The downtown has evolved into a wonderful eclectic mix of shops, restaurants, studios and amenities, many located in older buildings with their aura of heritage and timelessness. This sense of heritage runs through the town, fed by its sense of history and wonderful array of beautiful old homes. Bluewater Park has a play area for children, splashpad, fitness trail, pool, a small beach and fishing dock with a boat ramp. There is a statue of Warton Willie (Canada's only albino weather-predicting groundhog) who lives just across the street. So drop in and say hello.

WIARTON WILLIE

The Town of Warton is fortunate to have something that no one else has, an albino weather prognosticating groundhog.

As the most famous groundhog in Canada, and the only albino weather prognosticator in the world, Warton Willie's prediction of the timing of spring is a news event that captures the interests of people around the world. Each year media from around the world converge on Warton to hear Willie make his famous prediction.

The Warton Willie website receives hundreds of thousands of hits over the course of a few days from people all over the world and thousands more come to visit Willie both at the Festival and at his waterfront home in Bluewater Park.

The Festival has grown tremendously and offers something different each year. Visitors can expect parades, talent shows, fireworks, pub crawls, nightly entertainment, outdoor activities, ice carvings, dog sledding, scavenger hunts and so much more!

Warton loves their beloved groundhog so much that they have branded the town "Willie's Basecamp"! Banners, signs and sidewalks all boast that Warton is Willie's hometown.

Willie loves to make new friends so add a visit to the home of Warton Willie to your bucket list today!



MELISSA MCLEAN

SHOP

HANDICRAFT HOUSE TRADING POST.

www.hhtradingpost.com, 519-534-1777, 5 miles north of Warton on Hwy. 6. Unique shopping with a focus on Canadian-made. Sunday market. Open all year.

HOME SERVICES

WIARTON HOME BUILDING CENTRE.

519-534-2232, 10189 Berford Street, Warton. Homeowners helping homeowners. Visit us for all your hardware and building supply needs!

HOPE BAY

Beautiful Views

Hope Bay is located on Georgian Bay in South Bruce Peninsula. Surrounded by the Niagara Escarpment on both sides of the bay, this small sandy beach is the perfect place to spend a day. There are new washrooms facilities at the beach, a picnic area and access to the Bruce Trail is nearby.



The Hope Bay Campground right across the road, where visitors can grab an ice cream and snacks or rent a kayak to explore the shoreline. The nearby Hope Bay Forest & Nature Reserve is a great place to hike and the Bruce Trail passes through here. The Forest features spring wildflowers and many selections of fern. There is a gift shop nearby and choice of accommodation with cottages, bed & breakfast and cabins.

WIARTON FARMERS MARKET

Downtown Parkette
Open Victoria Day to Thanksgiving
Fridays – 10:00 am - 2:00 pm

<https://www.facebook.com/wartonfarmersmarket/>



JEANNETTE GALE

AREA HIGHLIGHTS

- 11 km Sand Beach
- Amusements
- Farmers Market
- Great Shopping
- Sauble Beach Sandfest
- Sauble Falls

SAUBLEBEACH.COM



ONE OF CANADA'S TOP 10 BEACHES!

Relax on the white sand to discover why Sauble is rated Canada's #1 freshwater beach!

Sauble Beach is the second longest fresh water beach in the world. Join us and bask in the sun on seven miles of beautiful, clean beach on the pristine shores of Lake Huron.

Originally named by the French explorers for the sandy sable river that empties into the lake at Sauble Falls. "La Riviere Au Sable" was its original name, which means "River to the Sand". This title was used on maps until 1881, when it was changed to "Sauble River." Soon after, the beach was named "Sauble Beach" which when translated means Sand Beach or Beach of Sand.

In the early decades of the 20th century, Sauble Beach became an increasingly popular vacation destination in concert with the

growth of the automobile and leisure time among the middle class. Most of the resort development of the modern beach area dates from about 1948, including still-surviving attractions like the Driftwood restaurant, Sauble Lodge Motel and the Crowd Inn hot-dog stand.

SANDFEST Second weekend in August

Sandfest is a fun weekend of live music, children's activities, sandcastle building, great prizes and much more!

PARKING IN SAUBLE BEACH

FREE Parking everyday after 5pm in most locations. You will often find free parking in Sauble Beach from September to May (but please pay attention to signage where you park, to ensure you are parked appropriately.

Private Lot owners – There are private parking lots downtown, including two that allow you to park on the beach. One is located just north of the Welcome to Sauble Beach sign and one behind the Crowd Inn. Parking rates are determined by the lot owners, but typically cost about \$10/day for a car.

Municipal Parking (Town of South Bruce Peninsula) – \$3/hour, \$12/day or \$100 for a seasons Pass. You will also find 15 minute Free parking sites, and Free 2 hour parking along Main Street. Check out southbrucepeninsula.com for further details.

Sauble Park (left of the entrance) – \$15.00 Monday to Thursday and \$20.00 per day Friday to Sunday. Here you can park directly on the beach. Check out saugeenfirstnation.ca for further details.



ACCOMMODATIONS

BEL AIR COTTAGES & MOTEL

www.saublebeachrentals.ca, 519-422-1051, 328 Main Street, Sauble Beach. Three minute walk to the second largest fresh water beach in the world!

NORTH SHORE BUNGALOWS

www.northshorebungalows.com, 519-422-1462, 107 2nd Ave, North, Sauble Beach. All the amenities of home (yes, that includes highspeed WiFi) & a pool.

RED BAY

Beautiful sunsets and beautiful flowers

In Red Bay, you will find a variety of wonderful family resorts, B&B's and campgrounds. Catch incredible sunsets at the end of your day with lingering colours along the shore. This little hamlet offers safe swimming in a sandy cove along with great boating, birding, hiking, fishing and sailing!



Still looking for something just a little bit different? Why not visit one of the many diverse rural gardens open for touring within this area! Offered on site at some gardens include such things as free Sunday jazz and blues concerts, faerie teas, monarch butterfly days, herbal delights workshops and much more. Learn more about native plants or get started on a bird friendly garden. Each touring garden has its own unique features and its own hours. Visit the rural garden website for a full listing of the entire group of gardens you may visit at your leisure!
www.ruralgardens.ca

Lion's Head

AREA HIGHLIGHTS

- Bruce Trail
- Fishing at Stokes Bay
- Lion's Head Lighthouse
- Picturesque Harbour
- Shopping
- Star Gazing
- Harbourside Music

VISITLIONSHEAD.CA

ANDREAS GADA



NIKKI DODGE

THE CALM, PEACEFUL NATURE OF LION'S HEAD

The rugged cliffs and rocky shores of Georgian Bay stage the setting for water adventure - sailing, boating, kayaking.

Bustling businesses offer clothing, quilts, art, hardware, day-to-day needs and groceries. Excellent meals, to tempt your palate, are located in the downtown core. Near to the downtown is a picturesque sandy beach. Located just a short walk beyond the promenade at the marina, which by the way, is part of the Bruce Trail, is a viewing platform, known as the POD, equipped with mechanical binoculars. Here's your opportunity for star gazing, in this wonderful 'Dark Sky' community.



KELSEY DICKINSON

DARK SKIES

Visual wonders of the night

Bruce Peninsula Biosphere Association's Bayside Astronomy happens every Friday and Saturday at sunset, from Canada Day to Labour Day at the Lion's Head Marina. 2,500 people from all over the world attend this event every summer. A group of volunteers led by local retired teachers, Doug and Paula Cunningham and the Student Program Manager, set up their own telescopes by the POD (Peninsula Observation Deck).

At dusk, just before the first stars appear in the night sky, the public gathers for a seat on the POD for a 20-30 minute star talk. As part of the talk, the constellations, planets and the brightest stars are pointed out, which helps the public understand what they will be seeing through the telescopes.

Due to its location, surrounded by water on three sides and far away from large cities which can provide light pollution, the Northern Bruce Peninsula is blessed with some of the darkest skies in Canada. Bruce Peninsula National Park is even recognized as a Dark Sky Preserve by the Royal Astronomical Society of Canada and the Northern Bruce as a Dark Sky Community.



DOUG CUNNINGHAM

MARK LAMBERT

ACCOMMODATIONS

LION'S HEAD INN & RESTAURANT

www.lionsheadinn.ca

519-793-4601

8 Helen St., Lion's Head

Three room inn. Large patio.

Serving pub fare to New York cut steaks.

Open year round.

MELLOWOUT BED & BREAKFAST

www.bbcanada.com/mellowout

519-793-4646

391 Pike Bay Rd.

Tranquil cedar bush setting and close access

to the many Peninsula outdoor pursuits.

FERNDALE

Once referred to as "A Dale of Ferns" developed amid the expanses of bare rocks and fertile farmland. It is geographically located at the intersection of Highway 6 and County Road 9. Ferndale has hosted a wide variety of commercial business ventures such as food establishments, accommodation, gas and snack bars, and will continue to do so on into the future. Many families have called the residential element of this hamlet home over the years.

Various businesses adorn each side of Highway #6 for you to explore! The cooperative Art Gallery in Ferndale, served as a school house, church and voting station over 100 years ago! Stop by the Ferndale Park and Visitor Centre just north of Ferndale for all your Bruce Peninsula information.

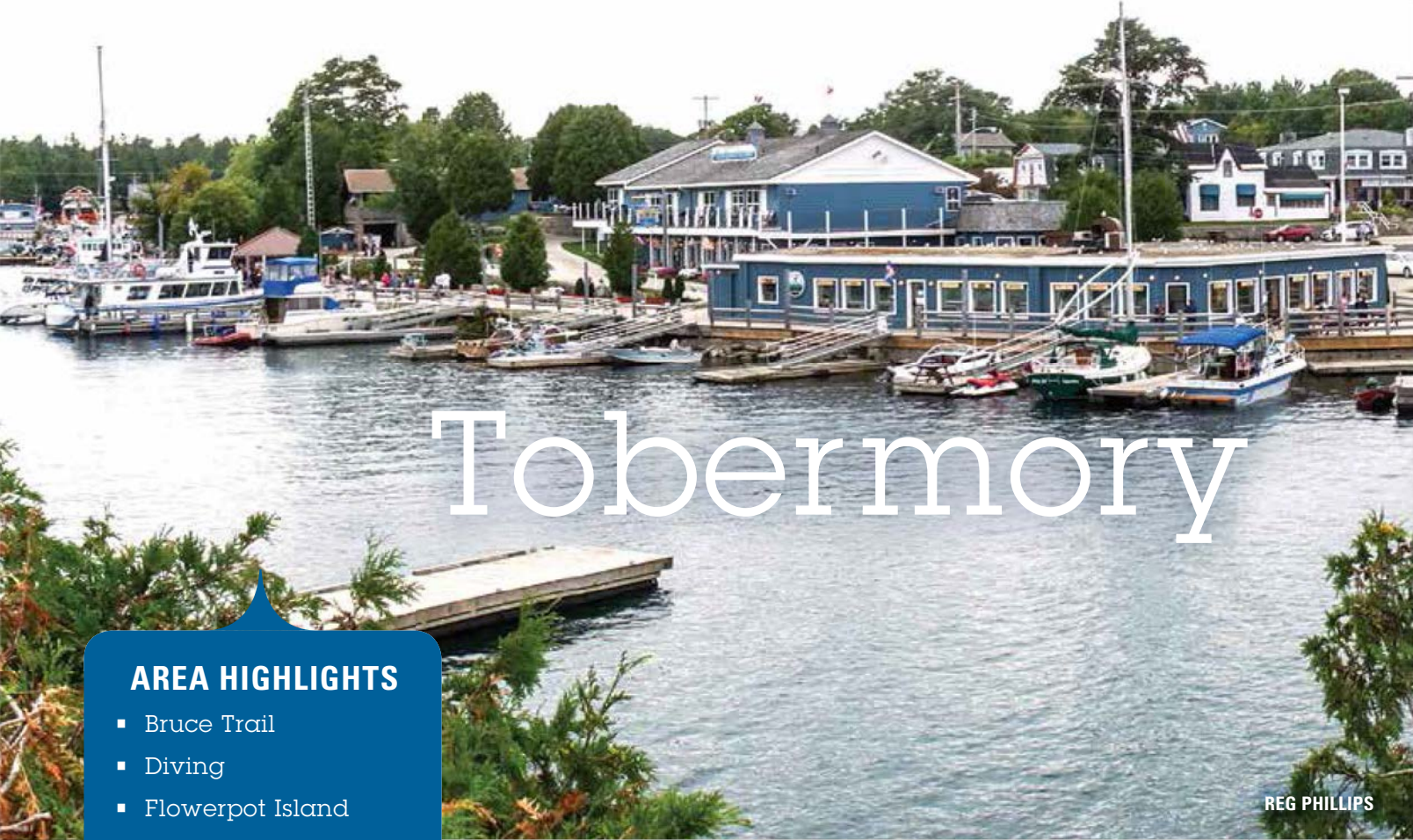
STOKES BAY

In Stokes Bay at the turn of the last century, there were two hotels, a store, a blacksmith shop, a cooper shop (barrel making), and later a restaurant and dance hall that provided lively local entertainment for people from miles around. Stokes Bay was once also a lively commercial fishing port with catches of trout, white fish, sturgeon and herring. Stokes Bay now offers quality campgrounds, a church, a general store & post office, a community centre and a marina. The area is home to many rare and unusual plants and wildflowers, some of which cannot be found elsewhere in Canada.

LION'S HEAD FARMERS MARKET

Phillip Forbes St, Beach Pavillion
Open Victoria Day to Thanksgiving
Saturday Mornings

facebook.com/LionsHeadFarmersMarket
lionsheadmarket.wordpress.com/

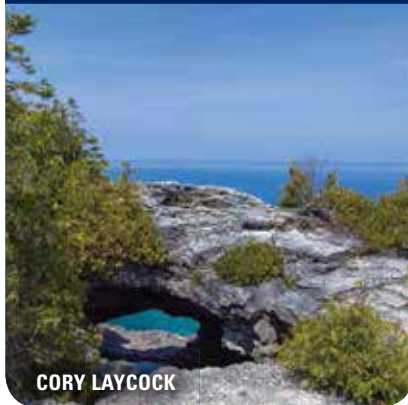


REG PHILLIPS

AREA HIGHLIGHTS

- Bruce Trail
- Diving
- Flowerpot Island
- Parks Visitor Centre
- Picturesque Harbour
- Shopping

TOBERMORY.ORG



CORY LAYCOCK



TOBERMORY...EXPLORE THE TUB

Tobermory is the “Northern Gateway” to Bruce Peninsula and the County’s premier tourism destination. The glistening waters and terminus of the Bruce Trail provide this coastal downtown with exceptional assets. With it’s frame houses and it’s two deep, natural harbours, “Big Tub” and “Little Tub”, the atmosphere is one of a quiet lakeside village. With a population of approximately 1,200 people, Tobermory is a full-service town and a centre for underwater, outdoor adventures and shopping.

Stroll and visit the eclectic shops and galleries where you will find clothing, sweets, groceries, crafts, antiques, art and souvenirs. Tempt your palate at one of the many restaurants, enjoy fresh Georgian Bay whitefish, or whatever your taste bud’s desire.

The cliff ringed harbour, shipwrecks and Parks Canada Visitor Centre bring elements of both national parks right into downtown. Here hikers will find the beginning of the world-famous 700-kilometre Bruce Trail. Tobermory pulses with a dynamic spirit and a passion for exploration and adventure.

People are only beginning to discover the friendly harbour village at the tip of the Bruce Peninsula. Tobermory is a place for families to reconnect, to get away from the stresses of life, and to reunite themselves with nature. Places like Tobermory and Little Tub Harbour are fast disappearing so take the time to enjoy their beauty.

TOBERMORY PAST

In 1870, the Township of St. Edmunds first opened for settlement, people begun to squat on the town plots as they were so conveniently located. In 1886 the town plots were put up for sale. With these available, the village began to grow and for a short time prospered.

Many hardships faced the early settlers. Brush fires, poor crops, drought and heavy snows dealt severe blows.

The greatest catastrophe that ever hit St. Edmunds Township occurred in 1908. A great bush fire razed the Bruce Peninsula destroying everything in its path. After this the population plummeted to a low point and did not raise to its former population until the 1970’s. The drop was due to the exodus of timber companies.

Throughout the 1800’s until WWI, it was quite common to see native encampments at St. Edmunds. Many had sailboats and would sell their catch to the local merchants or fish companies in the area.

Originally a lumbering and commercial fishing port Tobermory today is the centre of a thriving tourist trade.



LITTLE TUB HARBOUR C1950

ACCOMMODATIONS

APPLEWOOD INN DYERS BAY

www.applewoodinn.net, 519-795-7558, 967 Dyers Bay Rd, Miller Lake. Cottage rental, Bed & Breakfast and Dinner, overlooking Georgian Bay, on the Bruce Trail

SUMMER HOUSE PARK

www.summerhousepark.ca, 1-800-265-5557, Miller Lake. Resort camping, cottages, guest house. Excellent amenities, five-star children’s activities, sandy beach & more!

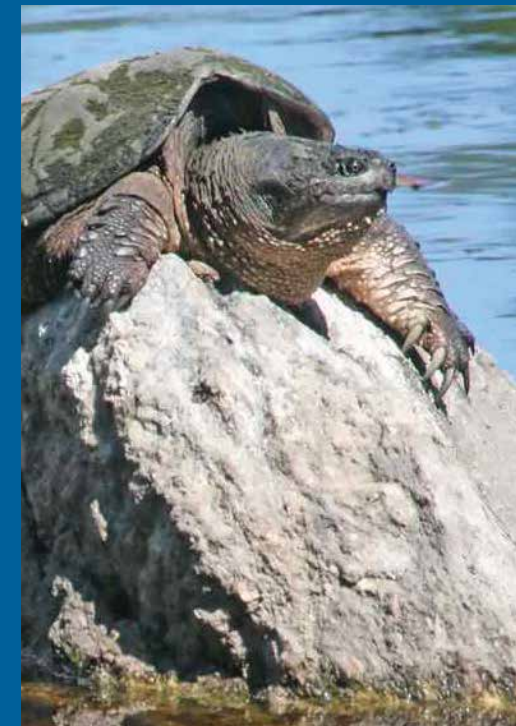
GOLFING

CORNERSTONE GOLF

www.cornerstonegolf.ca, 519-596-2332, 7178 Highway 6, Tobermory. Take a break from touring to experience this 9/18 hybrid course, licensed patio & restaurant.

MILLER LAKE

Largest inland lake on the Bruce Peninsula



Miller Lake, with its 9.2 hectares of pristine waters and varied shoreline, is the largest inland lake on the Bruce Peninsula. The quiet solitude of the lake attracts young and old who enjoy fishing for perch, bass and pike. Motor boat, canoe and kayak rentals as well as fishing supplies and a boat launch are available at Miller Lake. Some of the Peninsula’s best accommodation is also readily available with first rate camping, cottages and Bed & Breakfast’s overlooking the lake.

Centrally located in close proximity to both the cliffs of Georgian Bay and the rocky shallows of the Huron shoreline, Miller Lake is the perfect place to stay for access to all of the Peninsula’s beauty, including the famous Bruce Trail and Bruce Peninsula National Park.



PARKS CANADA VISITOR CENTRE

FIRST STOP ON THE PARK ODYSSEY. HERE ARE THE HIGHLIGHTS...

- **Interactive exhibits & interpretive programs** on aboriginal culture, wildlife, natural history, lighthouses, navigation & settlement history (plus a walk through a lighthouse and a cave).
- **20 m high lookout tower** with a view across the northern Peninsula and to Manitoulin Island (highest tower of its kind in all of Ontario's natural spaces).
- **Walkways and trails** for all ages.
- **Bruce Trail access.**
- **A high-definition show about the parks.**
- **Staff** to answer all of your questions!

Bruce Peninsula has two national parks and one of them is under water!

Discover a part of Canada's natural legacy in a unique world biosphere reserve. These parks are world renowned for their rugged beauty and variety of experiences. Take a walk, a swim, a dive, a boat tour. Bruce Peninsula National Park covers large areas spanning the northern Peninsula. The sculptured bluffs, cliffs and caves of the Niagara Escarpment form two sides of this unique natural area, the sloping shores and bays of Lake Huron a third. Beyond the southern edge, the largest remaining patch of contiguous forest in southern Ontario ends, and farmland begins.

Bruce Peninsula National Park offers you truly spectacular scenery, where the cliffs of the Niagara Escarpment meet the second-largest of the Great Lakes. Over the past 10,000 years, great changes in water level have eroded the softer portions of the stone, leaving the tougher "caprock" of ancient coral reefs. The resulting cliffs form the backbone of Bruce Peninsula, the heart of the Park. Further inland, and on the western side, wetlands, lakes and globally rare alvar ecosystems present a unique array of wildlife and plants. Over 40 species of wild orchids live here. Wildflowers like the lakeside daisy and dwarf lake iris, which bloom in late May, are found only in this region.

Grotto tip: The parking lots to access the Grotto fill up daily in July & August from mid-morning until late afternoon, and you may be redirected to enjoy other locations. Weekends and holidays can be exceptionally busy. Consider planning your visit for the early morning or during spring and autumn seasons. Come to the Parks Canada Centre for park information, exciting exhibits, a tower and trails that lead to Georgian Bay.



FATHOM FIVE NATIONAL MARINE PARK

The harbour of Tobermory is your gateway to Fathom Five, the northern climax of the Niagara Escarpment UNESCO Biosphere Reserve. The sparkling clear waters and stepping stone islands welcome you to the rich diversity and maritime heritage of Georgian Bay. Twenty-two shipwrecks remain on the lake bed to tell their stories. These connections to our past are over a century old and a few have sunk within sight of the three local lighthouses.

The cold, clear freshwater and fascinating geology have made Fathom Five the "Scuba Diving Capital of Canada." Local charters cater to SCUBA divers and snorkelers. Please remember to register at the Parks Canada Visitor Centre where you can also see exhibits about local diving and marine history.

Other ways to experience Fathom Five include taking a boat cruise, catching a tour boat to Flowerpot Island, kayaking, climbing the viewing tower or hiking the trails at the Parks Canada Visitor Centre, taking a dip in the cool blue water at the Big Tub Lighthouse, or simply sitting back and enjoying a sunset from Little Tub harbour.

FLOWERPOT ISLAND

The jewel of Fathom Five National Marine Park, Flowerpot Island is famous for its awesome natural rock pillars. This is a must-see attraction! On a trip to the island, you can photograph the rock pillars, climb stairs up into a cave, visit an historic light station, swim in crystal-clear water and enjoy a relaxing picnic. Your trip to the island begins in Tobermory's picturesque harbour. From spring to fall, tour boats operate on a regular schedule (weather dependent) and pass over shipwrecks en route to the island. Plan to spend a half-day or more on Flowerpot Island to have ample time to explore and relax. Six tenting sites are available for primitive camping; register in advance at the Parks Canada Visitor Centre.

Flowerpots rank highly as one of the most photographed icons of the Bruce.

CYPRUS LAKE CAMPGROUND

CYPRUS LAKE ROAD,
TOBERMORY, ON
GPS: 45.225937 N, 81.524772 W

VISITOR CENTRE

CHI SIN TIB DEK RD,
TOBERMORY, ON
GPS: 45.257412 N, 81.655633 W



PARKS CANADA

You might not think the word beach could suggest much diversity of experience in a small area, but Bruce Peninsula is always full of surprises.

On the Lake Huron side, especially at Sauble, you will find long, wide expanses of sand sloping gently into the lake, and on a warm day, a lively, excited and exciting crowd of people. The water is clean, shallow and warm, the sand golden and sugary, the people welcoming, the services and amenities excellent, and Sauble Beach is justly celebrated as one of the great summer beaches of the world.

It even offers an artistic dimension: the sugary sand invites the creation of castles and sculptures of all kinds, the only limit is your imagination. By late afternoon, a walk down the beach is an art gallery experience.

If you are looking for a quiet, lonely beach where you can get away from all the crowds and bustle for a peaceful swim and an afternoon watching the sun shine on the water, you can hardly do better than ... but if we publish where it is, it won't be quiet and lonely any more, will it? Let us just say that you can find it quite easily by poking along the shoreline, or hiking into a likely looking spot, or even sometimes by driving along the shoreline roads and keeping your eyes open.

If the beach of your dreams has sand and warm water, then the Lake Huron side is for you. If you like your water cold and the shoreline more rugged, with boulders, shale and ancient limestone pavements, head for Georgian Bay. But please be a bit careful and swim safely: the rocks can be slippery, the bottom often shelves off sharply, the water can be deep and cold, and the wind can play dangerous tricks when it comes from the east. Don't swim alone and watch the kids closely.

AREA BEACHES

- Singing Sands
- Black Creek
- Sandy Bay
- Dorcas Bay
- Dyers Bay
- Red Bay
- Big Bay
- Hope Bay
- Pike Bay
- Oliphant
- Sauble Beach
- The Grotto
- Indian Head Cove
- Lion's Head
- Cabot Head
- Bluewater Park
- Neyaashiinigaamiing

MAKE A SPLASH

The warmest and gentlest places to get wet are the beaches of the Lake Huron side, of which Sauble Beach is the undoubted and peerless monarch. It's not just a beach, but a whole summer recreational community. Between Sauble Beach and Singing Sands at the northern end, you can find many smaller and more quiet beaches that offer the same quality of swimming in varied and interesting surroundings.

On the Georgian Bay side the water is generally colder, especially in July, and the underwater drop-off often much steeper. You can swim there with pleasure, but use extra caution, and keep an especially close eye on your children. Some of the beaches are boulders or flat stone; some have sand.

The eastern beaches are quite varied and finding the one that suits you best can be an interesting kind of exploration in its own right.

Boating (sailing or motor-boating) on the Great Lakes is an adventure of its own kind, more like seafaring than lake sport. But it's only safe for experienced people with bigger boats, and the winds can come up very fast. These are big lakes, and should be treated with proper respect. For those with smaller boats and less experience, the smaller lakes around the Peninsula are recommended.

Fishing has long been a popular Peninsula sport, but in recent years its success has been variable. Check

around and find out how the season is going before you get your hopes too high. If you are fishing from the shore please stay on the trails, don't cross private land without permission, take your garbage out with you, and fish only in approved locations. It is illegal to use or possess lead fishing sinkers or jigs in the national parks and wildlife areas, and you shouldn't use them anywhere.



PARKS CANADA



MIKE CAMPBELL



PARKS CANADA



JERZY KOWALCZUK

WATER AROUND THE BRUCE

SHIPWRECKS

You can see them from the shoreline and from the glass bottom boats, but there's nothing more exciting than seeing them with your own eyes.

For a family adventure or for group fun, snorkeling on the shallow shipwrecks can be a great introduction to the secrets of Fathom Five National Marine Park. Snorkelers and divers can enter the water from shore or from a charter vessel where they will be educated by the captains on the history of the shipwrecks. These explorers will be witnessing history through the lens of their mask. Our historic shipwrecks date back to the 19th and early 20th century, preserved in the crystal clear freshwaters of Tobermory, paying tribute to our marine heritage.

Scuba Diving is not just for Divers anymore! The dive shops of Tobermory offer PADI Discover Scuba Diving experiences for the first time diver who has always wanted to try diving. The courses are conducted at shallow dive sites in pool-like conditions where they will see shipwrecks and marine life.

All Divers must register with Parks Canada before entering the water. Fathom Five Marine Park Tags can also be purchased at the two dive shops in downtown Tobermory.

Certified scuba divers can enjoy dive charters aboard Transport Canada Certified Vessels with knowledgeable captains, to destinations within 45 minutes from Little Tub Harbour. Most two-tank charters are four hours in duration.

Although Tobermory is best known for its shipwrecks, it is also a geological wonderland both above and below the surface, with swim-throughs and overhangs, limestone shoals, whalebacks, deep pitting, pinnacles and sinkholes. Within the waters of Georgian Bay and Lake Huron lives a unique marine ecosystem that is diverse and fragile and continually changing.



JERZY KOWALCZUK



JERZY KOWALCZUK

Regardless of your experience as a diver or snorkeler, the dive shops of Tobermory will introduce you to Canada's premiere dive destination. So come dive into history and experience the wonder of Fathom Five National Marine Park!

BY MIKE MARCOTTE

PADDLING THE PENINSULA!

Kyaking can be a fun and enjoyable way to see the Bruce Peninsula from a different perspective.

The intimacy of meandering amongst the shoreline is something a motorboat can never offer. For a first time endeavour, consider kayaking on one of the many inland lakes or rivers. Kayaking on the big waters of Lake Huron and Georgian Bay comes with inherent risk. Many experienced kayakers from the East and West Coast underestimate the volatility and unpredictability of our Great Lakes. When venturing out, please carry all the necessary equipment to ensure a safe and enjoyable trip.

There are many rental and retail locations that will be able to outfit you with all the necessary gear and information. The Bruce Peninsula also has a few businesses that specialize in guided tours. This five star experience tends to be more relaxing and safe for beginners and experienced paddlers who want the ultimate experience with little planning. An experienced guide can help you understand local knowledge, ensure you are properly outfitted, recognize developing weather patterns and be able to provide you with a trip based on your capabilities. In many cases, they can tailor a trip to your needs, wants and desires. If you

are nice they may even show you some secret spots!

The cliff and cove shoreline around Tobermory and some harbours – particularly on the Lake Huron side – are hospitable places for the kayak, and even for the canoe if you stay close to shore. Venturing out into more open water, however, is sport only for the experienced paddler. As with all water sports on the big lakes, always remember to check the marine forecast before you go out, and if it looks bad, don't go. Winds can be very unpredictable.

For river canoeists, especially those wanting a strong historical buzz, the Rankin River route begins at Sky Lake on Red Bay Road and ends 18 km beyond at Sauble Falls Provincial Park. This is part of an aboriginal Peninsula crossing, completed on the eastern side by a portage trail between Wiarton and Boat Lake. Or you can enter the Sauble River west of Hepworth, and paddle down to Sauble Falls from there.

BY ZANE DAVIES



MIKE CAMPBELL



FISHERMEN KNOW WHY THEY FISH, AND ALWAYS HAVE

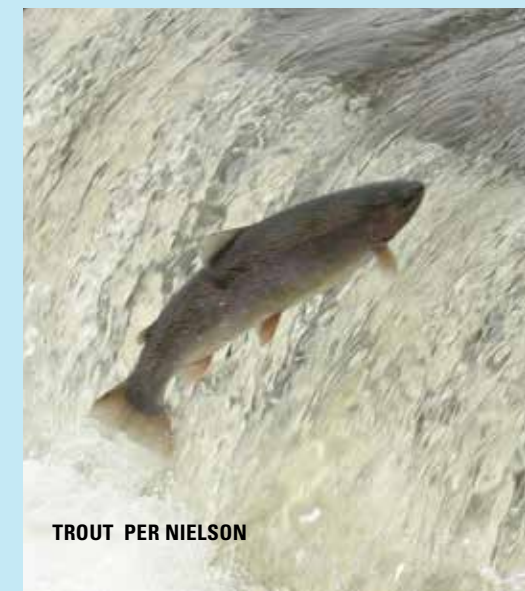
As Sir Henry Wotton said, 400 years ago: "It is a rest for your mind, a cheerer of your spirits, a diverter of sadness, a calmer of unquiet thoughts, a moderator of passions, a way to peace and patience."

FISHING REGULATIONS

Canadian residents (age 18 to 64) can fish in Ontario only if they have an Outdoors Card with a fishing tag or a certified application, which can be obtained from a license issuer or by calling 1-800-387-7011. For up-to-date information on regulations and species catch limits contact the Ministry of Natural Resources at www.gov.on.ca/MNR/fishing.

MAJOR ANNUAL FISHING DERBIES

Try your hand at the Chantry Chinook on Lake Huron (late July) and the Owen Sound Salmon Spectacular (end of August).



TROUT PER NIELSON



EXPLORE ONE OF THE GREAT PLACES IN THE WORLD FOR ORCHIDS

Bruce Peninsula is one of the great places in the world for wild orchids. At certain times of the year they bloom in astonishing abundance. The spectacular orchids are primarily a feature of late spring and early summer.

The Orchid Festival is scheduled to celebrate them. (www.orchidfest.ca) But orchids of the quieter kind can appear any time in the summer, and in quite surprising places, if you keep your eyes open.



Throughout the spring and summer, you can find orchids, asters, ferns, an unusual mixture of trees, shrubs, mosses and lichens. All are present in rich abundance. Enjoy them. Be careful where you put your feet – some of these creatures can be crushed – and please don't pick them, or try to transplant them. Take lots of pictures, and enjoy them that way.



THE HEART AND SOUL OF BRUCE PENINSULA

If you want to get down to the roots, then you will seek out some encounter with Nature.

Nature is a complex and resilient phenomenon, and the Peninsula is particularly a place to appreciate its resiliency. Because while we offer Nature ample opportunity to strut her stuff, she has not been left alone to do that in her own way, not for many years.

Let us take for an example a particular piece of forest in the central peninsula. It is a healthy, diverse, vibrant natural ecosystem. You can walk in it with pleasure all day, observing and enjoying the abundant flora and fauna, or simply absorbing the atmosphere of the place.

And yet, if you look carefully among the thick undergrowth, you will see massive stumps scarred by fire, and you will realize that this land was once heavily timbered, then logged, then seriously burned. And if you observe more closely and ask around, you will find out that the fire was caused by settlement, and fed to extraordinary heat by the slash left by loggers. It was stripped and burned right down to the rock.

Then it was left alone, because there was nothing more to remove, and nature took it back. That is an amazing story that you can read in the woods, along the roadsides, on the trails, in the many places where Peninsula Nature offers you a view into her soul.

NATURAL CAUTIONS

Bruce Peninsula is a natural area and all natural areas have their risks.

Wherever you are, it's always wise to know what the risks are, and what to do about them. The overriding rule is this: keep risks in perspective. Bruce Peninsula is not a dangerous place. Take reasonable care and follow these main rules. Visit our web site (www.brucepeninsula.org) for more details.

Wear proper clothing. Wear shoes or boots on the trail, not sandals; wear boots in the bush. Wear long sleeves and long pants to avoid insect bites and sunburn.

Observe all the safety rules for any equipment you might be using: canoe, kayak, boat, ATV, snowmobile, bicycle, car, skis, snowshoes, etc. If you don't use it properly, any piece of equipment can let you down or get you in trouble.

Watch the weather, and particularly don't go out on the water or into the bush in dangerous conditions. On the water, even a moderate wind can be a problem for small boats. Watch the forecasts, pay attention to the conditions, and don't boat beyond your experience or your equipment. In the winter, snow squalls or blowing snow can cause dangerous driving conditions.

Don't swim alone, ever. Don't hike alone without telling someone where you are going and when you expect to return. Remember to check in when you do return.

Don't approach wildlife, and don't let them approach you. If you are bitten or scratched (extremely rare), seek medical care immediately. Don't surprise wildlife, and don't corner them. Make noise when you are walking in the woods. If you meet an animal, make sure it has a way to escape – remember they will if they can.

Don't interfere with young wildlife. Even quite gentle creatures will protect their young. On the flip side, if a mother bear thinks her young are in danger, she can make herself very unpleasant. She's a good parent, so treat her with respect. If you meet cubs back away slowly, don't run, and don't hang around to take pictures.

Clean up your garbage. Animals have acute sense of smell; leaving food around or not cleaning up invites bears, coyotes, skunks and raccoons, even dogs.

Keep your dog on a leash, always. Dogs have no sense around wildlife. They are a hazard to themselves, and to you. Your dog's encounter with a skunk, porcupine or rattlesnake will do nothing to improve your holiday.

Stay away from any low-growing, three-leafed plant. It could be poison ivy, which is not fatal, but can make you very uncomfortable. Don't handle plants unless you know what they are. Poison ivy is very common on the Peninsula. If you get a bad dose, seek medical care; for a mild one, ask a pharmacist.

Watch where you put your feet. Rattlesnakes sometimes rest or sun themselves on the trails. They are not aggressive, but they will defend themselves, and if you step on one they will bite. Don't try to pick them up. A rattlesnake can strike you if you're very close to it, and they won't chase you. If you see one, move away, and keep away. If you are bitten (extremely rare), don't panic. The venom does not act fast; you have at least a couple of hours before you are in trouble. Walk slowly and calmly back to where you can go or call for medical care. Bites are rarely fatal to dogs, but can make them sick.



If you are an experienced birdwatcher you don't need any advice from us. You will know where to go and what you are doing. We will simply inform you that the Bruce Peninsula is an important migration route with an abundance of water, shoreline, wetland, beach, woodland, field, meadow and escarpment habitats offering an abundance of species.

Exploring the Peninsula by looking for and identifying birds is a particularly interesting way, greatly assisted by our network of back roads that pass through many different habitats. To get started you need a reasonably good pair of binoculars, a good field guide (from any bookstore), a map, and some time. For the inexperienced person, bird-spotting is an on-foot activity, just right for the Peninsula.

TEN PENINSULA BIRDS TO WATCH OR LISTEN FOR

American Redstart	Sandhill Crane
Bobolink	Scarlet Tanager
Brewer's Blackbird	Upland Sandpiper
Indigo Bunting	Whip-poor-will
Pileated Woodpecker	Winter Wren



Old-Chesapeake Cat Ferry to
Manitoulin Island • the 4Seasons



LAKE HURON

GEORGIAN BAY

Points of Interest

-  Airport
 Attraction
 Beach
 Bike Park
 Boat Launch
 Bruce Trail - Camping
 Canoe Launch
 Conservation Lands
 Cross Country Skiing
 Hospital
 Information Centre
 Lighthouse
 Museum
 National Park
 Provincial Park
 Scenic Lookout
 Waterfall

 Provincial Highway

-  County Road
-  Municipal Road
-  Ferry
-  The Peninsula Quadraloop Tour
-  Multi-use Trail
-  Bruce Trail

Base map courtesy of
Bruce County Tourism.

MELISSA MCLEAN

Exploring by FOOT

PACKING FOR A DAY TRIP

Be prepared for a hike on the Bruce Trail (or any trail) with these essentials:

1. **Water:** 1 litre per person, 3 litres in summer
2. **Food:** Lunch and/or high-energy snacks
3. **Map:** from your Bruce Trail Reference Guide or Downloadable Maps
4. **Hat:** for sun protection or warmth) and gloves
5. **Clothing layers:** including a warm layer and a waterproof and windproof shell
6. **Extra socks:** dry socks are key to avoiding blisters
7. **Whistle**
8. **Compass**
9. **Insect repellent & sunscreen**
10. **First-aid kit:** including moleskin & a pair of scissors
11. **Small flashlight**
12. **Swiss Army knife**

When you walk on the stone of Bruce Peninsula, you walk on the bottom of an ancient sea.

Even at its most elevated places, where heights of the Niagara Escarpment treat you to a view far across Georgian Bay, you may feel the presence of creatures who, four hundred million years ago, laid their bones and shells upon the rock for the benefit of your exploring feet. Much has happened since, of course, to vary the terrain.

The base for the trail is a gift of nature. The trail itself is due to the volunteers and organizers of the Bruce Trail Conservancy. On the Peninsula, the Bruce Trail begins at the cairn in Tobermory and follows the Escarpment through cedar and hardwood forests, along the rocky shoreline of Georgian Bay, over juniper covered alvars, by wetlands and fields over 165 km to Wiarton, then around to Big Bay, Kemble Mountain, and on to Owen Sound. Along the way there are also over 85 km of side trails to explore.

The hardwood forest floor springs to life in April and peaks in early May with a wonderful profusion of wildflowers. Many of the Peninsula's renowned orchids are found by the trail. You may be chilled and thrilled by a chance viewing of a shy rattler, a black bear or a bald eagle. Birding, flower viewing and looking for mushrooms, fossils or old growth cedars are all part of the Bruce Trail experience. Hikers tell us of their wonder at the cliffs, the colour of the water, the quiet, and the wonderful rich smells of nature in the woods. Hiking on the trail is free; we only ask you to stay on the trail and treat the land with respect.



10 TIPS FOR HIKING SAFELY

- 1 Always prepare ahead for a hike.
- 2 Make sure you have adequate clothing & footwear.
- 3 Carry essential articles in a day pack.
- 4 Modify your hiking speed in inclement weather and take extra care where the path is rocky, where it follows a cliff edge, or where it passes by caves or crevices.
- 5 Be aware that some of the road and railway crossings along the Bruce Trail are very hazardous.
- 6 Avoid hiking alone. If you must hike alone, give someone your route and timetable.
- 7 Treat all water obtained along the Trail, except potable water which is available in parks and conservation areas.
- 8 If you lose the Trail, try to retrace your steps to the last blaze. If this fails, sit down. Have something to eat, then look at your guide and map and try to concentrate calmly on where you may have gone wrong.
- 9 Give wild animals a wide berth and never get between a mother of any species and her young.
- 10 If you are camping, always hang your food, soap and toothpaste in a bag on a line strung between two trees about 4 metres off the ground and away from your tent. Do not take your backpack into your tent since it may smell of food.

ACCOMMODATIONS

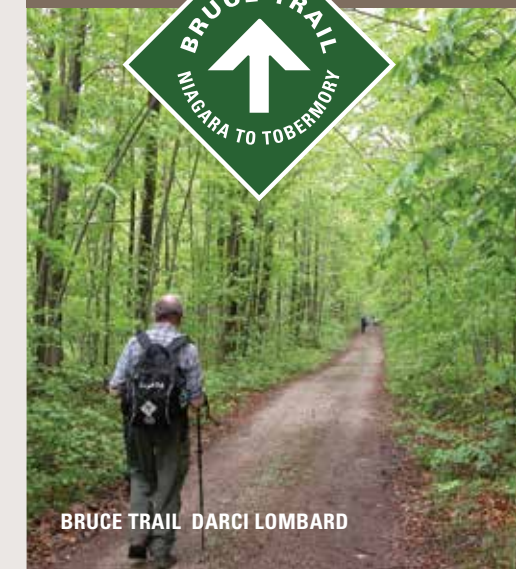
SUMMER HOUSE PARK.

www.summerhousepark.ca, 1-800-265-5557, Miller Lake. Guest house, cottages, camping for hikers. Shuttle service to/from the Bruce Trail. Hiking/biking touring groups welcome.



GO FOR A HIKE!

- 1) Bruce Peninsula National Park. A network of trails brings you to the famous "Grotto" sea arch formation, a great place to visit in all seasons.
- 2) "Devil's Monument" flowerpot found south of Dyer's Bay is one of the Trail's most popular spots.
- 3) Just north of both Wiarton and Lion's Head are caves worth exploring. Along the entire Peninsula route, the sculpturing of limestone by ice, water, chemistry and time makes for an endless variety of shapes and impressions.
- 4) At Lion's Head/Gun Point, the Bruce Trail passes by the world's greatest concentration of curious geological "potholes." Theory has it they were formed by runoff water at the end of the ice age.





The Human FOOTPRINT

POW WOW, SAUGEEN, PETER K. BURIAN

THE CHIPPEWAS OF SAUGEEN & NAWASH

When the ice went out, some 10,000 years ago, the people moved in, or back in, no doubt following the game. They were the ancestors of the various peoples who came to inhabit the area in more recent times. For most of the pre-contact period, the Peninsula was inhabited by the Saugeen Ojibwa and their ancestors, except for a brief time in the 17th century when they may (or may not) have been displaced by the Iroquois following the latter's dispersion of the Hurons around 1650, a military achievement much assisted by prior epidemics of measles and influenza.

When the Iroquois were pushed back 50 years later, the Peninsula was secured by families of the Anishinaubaek (Ojibwa), known also as the Chippewas of Saugeen and Nawash, with lands and communities on the west and east sides and the northern end of the Peninsula. The story of the loss of land possession and other rights by these people, a story largely of inconstant policy and bullying with or without good intentions, is not a happy one. Fortunately the sequel, under which important rights (such as fishing) are restored and a measure of amiable accommodation and forward progress achieved, is still being written. You can see the writing on the land and among the people in the communities of Saugeen and Neyaashiinigaamiing (Cape Croker), whose traditions and culture are celebrated in their way of life and annual Pow Wow.

Visit these communities, hear their stories (some of them among the oldest in the world), and learn about their proud and distinct traditions and culture, thriving and evolving on unceded lands, which means they were never given up by treaty. Also part of the entitlement are two hunting reserves, today surrounded by Bruce Peninsula National Park, adding a unique dimension to the preservation ethic now so richly represented in Northern Bruce Peninsula.

SPIRIT ROCK

**JUST NORTH OF WIARTON
OFF HWY 6**

The name Spirit Rock is derived from a legend involving an Indian maiden. Today, when the lighting and angles are just right, many claim the face of the maiden can be seen in the cliffs from below.

Encompassing 87 hectares, Spirit Rock Conservation Area features historical ruins, an impressive view of Colpoys Bay from the top of the Niagara Escarpment, a spiral staircase to the water's edge and access to the Bruce Trail.

In 1881, this site became home for Alexander McNeill, a Federal Member of Parliament for the North Bruce Riding from 1881-1901. McNeill developed the land into beautiful gardens, manicured lawns and productive orchards and farmland. The heart of the estate was The Corran, a 17-room mansion lavished with oriental carvings, ancient weapons, tapestries and book-lined walls.

The property was sold to Grey Sauble in 1976. Shortly after, a fire destroyed the mansion leaving only a stone shell which is still visible today.

THE ARTIST'S EYE

We expect artists to excite and feed our imaginations and show us things we cannot see for ourselves.

When they look they don't just see what they see, they see into it, they go deep, and the greater their talent, skill and experience, the deeper they go, until they are able to capture its very essence, and express that in colour, highlight, shape and arrangement. To walk among the artists of Bruce Peninsula and to view their work widely is to look into the soul of the place and experience its ultimate nature.

The art of finding Bruce Peninsula art that is right for you, that best matches your imagination with the soul of the place, begins by experiencing the work of many artists and, if possible, by talking to them and to people who know them. This is the role of galleries, art shows and studio tours. The Bruce Peninsula Society of Artists, centred in Lion's Head, Shoreline Artists, in Sauble Beach and Southampton, Artists Around the Sound, and our many galleries and studios, offer those experiences. Viewing art and talking to artists are among the finest experiences the Peninsula has to offer; buying art is the ultimate in taking them home for permanent and lasting enjoyment. That is an experience to be savoured and enjoyed at leisure, just like the rest of the best the Peninsula has to offer.



ART & Culture

HANNAH WILKENS



TAKE TO THE SKY

WIARTON KEPPEL INTERNATIONAL AIRPORT

501262 Grey Rd. 1, Unit 1,
Georgian Bluffs, ON N0H 2T0
519-534-0140

After hours:
519-373-3954 / 519-270-4715
airport@georgianbluffs.on.ca

COPA FLIGHT 68

70 Main St.
Lion's Head, ON N0H 1W0
Captain:
Don Colter, 519-793-3473
Secretary:
Jenn MacLeod, 519-270-4436

FOTA (FRIENDS OF THE AIRPORT)

220 Tamarac Rd.
Stokes Bay, ON N0H 2M0
Co-ordinator:
Hank Nuis, 519-592-5602
Secretary:
Brian Reis, 519-534-4090

TOBERMORY AIRPORT

73 Warner Bay Rd
Tobermory, Ontario N0H 2R0
519-596-2898

All-Season EXPERIENCES

Visit the Bruce Peninsula in all seasons
to truly experience its essence!



GAIL PORTER



BRENDA TITHECOTT



WINTER ACTIVITIES

- Snowshoeing
- Cross-Country Skiing
- Ice Fishing
- Tobogganing
- Ice Diving

CORY LAYCOCK

FALL ACTIVITIES

- Hiking
- Community Fall Fairs
- Rock Climbing
- Paddling
- Fishing Derby

SPRING ACTIVITIES

- Maple Syrup Festivals
- Birding
- Orchid Festival
- Fly Fishing
- Cycling



SHELL PARTINGTON



JERZY KOWALCZUK

HANDICRAFT HOUSE TRADING POST
www.hhtradingpost.com,
519-534-1777, 5 miles north of Wiarton on
Hwy. 6. Unique shopping with a focus on
Canadian-made. Sunday market. Open all year.

MELLOWOUT BED & BREAKFAST
www.bbcanada.com/mellowout,
519-793-4646, 391 Pike Bay Rd. Tranquil cedar
bush setting and close access to the many
Peninsula outdoor pursuits.

WIARTON HOME BUILDING CENTRE
519-534-2232, 10189 Berford St., Wiarton.
Homeowners helping homeowners.
Visit us for all your hardware and building
supply needs.

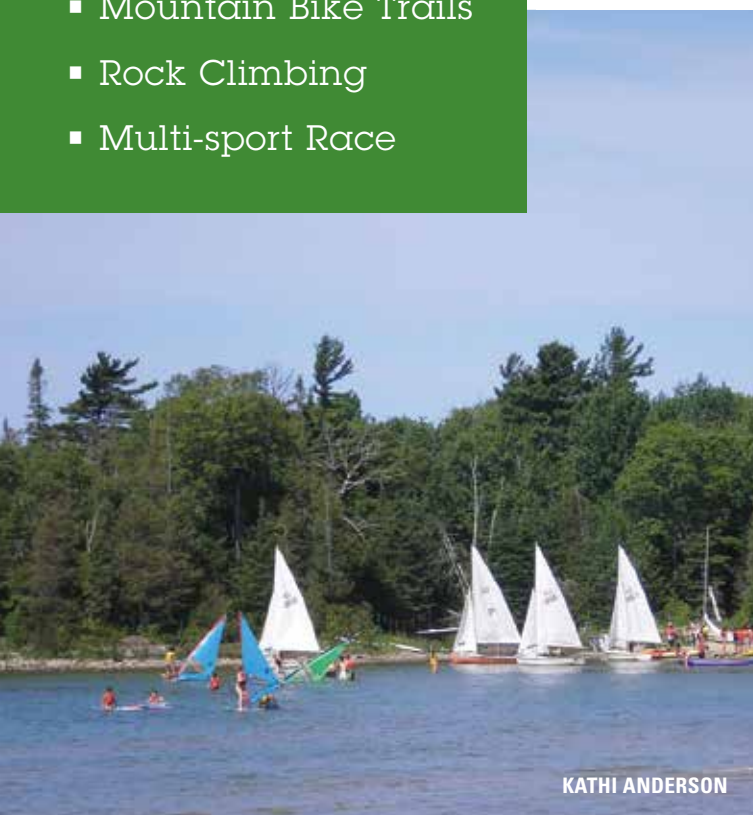
Experience ADVENTURE

EXTREME PENINSULA ADVENTURES

- Kite Surfing
- Boat Tours
- Mountain Bike Trails
- Rock Climbing
- Multi-sport Race



REG PHILLIPS



KATHI ANDERSON



REG PHILLIPS

PARKS CANADA



NIKKI DODGE



STEVEN BOGNAR



**Get your daily
dose of iron!**

1. Cottage Country 9-hole courses are built with all level of players in mind, from the beginner to the avid golfer. The fun of playing a course that will not beat you up, and the beauty of a rural natural setting can only add to your experience, while on vacation.
2. A 2-hour round can easily be fit into your day without burning you out, enabling you to enjoy your family and other activities.
3. A quick round of golf is a great way to have some fun, break up your day and enjoy the outdoors while getting exercise.

ADVENTURE

BLUEWATER TRAVEL & TOURS

www.bluewatertravel.ca, 519-534-2671, 347 Frank Street, Wiarton.
Day Trips, Tours, Reservations on the Beautiful Bruce Peninsula.

BRUCE ANCHOR CRUISES

www.bruceanchor.com, 519-596-2555 or 1-800-591-4254, 7468 Highway 6, Tobermory.
Glass bottom boat cruises, motel and cottages located on the very tip of the Bruce Peninsula.

CORNERSTONE GOLF

www.cornerstonegolf.ca, 519-596-2332, 7178 Highway 6, Tobermory.
Take a break from touring to experience this 9/18 hybrid course, licensed patio & restaurant.

ONTARIO WINTER CAMPING

www.ontariowintercamping.com, 226-668-3030, Bruce Peninsula.
Fully catered yurt and treehouse adventures on the U.N.E.S.C.O recognized Bruce Peninsula.



CORNERSTONE GOLF CLUB

CAMPING & Cottaging

DARCI LOMBARD

CAMPING

In the old days, making camp meant finding a likely campsite with a good, safe place for the fire, pitching the tent, cutting some balsam branches for bedding, digging the latrine, and finally settling in for the night. Luckily you have other options!

Getting away from the rat race for a supreme camping holiday is in fact as easy as packing the car and heading for Bruce Peninsula! The area offers diversity in camping experiences, as in everything else. The popular Bruce Peninsula National Park has both unserviced sites at Cyprus Lake as well as hike-in, backcountry camping along the beautiful shores of Georgian Bay. There are over 17 private parks in the area that offer unserviced tent camping, as well as full-serviced RV and seasonal facilities. Find your perfect site along the big waters

of Lake Huron or Georgian Bay, or nestled in a cool forest or by a calm inland lake. For those who don't want to "rough it," several private parks in the area offer housekeeping cottages as well as camping cabins or RV rentals, where one can enjoy the camping experience while not forgoing some of the comforts of home.

If you are looking for a place to get away from it all, experience the stillness of nature, tell stories and share memories with friends and family, then we invite you to come camping with us! Pack the car, and don't forget your camera – or the marshmallows!

RACHAEL WILKENS

LET'S GO TO THE COTTAGE!

A simple phrase that evokes memories on many levels – and lifetime experiences never forgotten.

Whether it was a friend's tiny rustic cabin, Aunt and Uncle's spacious property with cottage and bunkies, or one that has been handed down and used lovingly by members of the family, cottaging on Bruce Peninsula forges memories that last a lifetime. You never forget your first summer love; staying up all night watching for shooting stars in the blackest of skies you've ever seen; and scrambling over rocky shorelines.

These are only part of the magic and mystique of why generations of people have made their way up the northern section of Highway 6 or towards Sauble Beach and, after visiting, made the decision to buy "the family cottage." If this concept is a little daunting, try renting. In fact, rent in a different area every year or rent

the same place and create your own version of the family cottage. Bruce Peninsula offers cottage experiences in a variety of sizes, styles and quality to fit all pocket books, so anyone can get into cottaging. From waterfront lots to a small acreage with your dream cottage, the choice is yours.

Cottaging on Bruce Peninsula is all about family and friends; the memories we develop and cherish; of times spent exploring and experiencing all the wonders the area has to offer; and the experience of returning to the cottage to relax in front of a roaring fire to carry on the conversation of what you did today and what you'll do tomorrow in this unique and diverse special place.

KELSEY DICKINSON

TOP 5 REASONS FOR COTTAGING ON THE BRUCE PENINSULA

1. No matter where you base yourself, you are never far away from the crystal-clear waters of both Georgian Bay and Lake Huron.
2. The travel distances between settlements are rarely more than 45 minutes (and unless it's on the weekend, relatively traffic-free).
3. Nature is all around you, regardless of your location, so the pace of life is softer, slower and friendlier. Be prepared to wave 'hi' to people, ask about the weather (and actually wait for the answer), and wander aimlessly.
4. It's a great place to bring family and friends, everybody can relax and enjoy the company, and you can show people around all the beau-ties of the Peninsula.
5. And on top of the wonderful quality of life, it's a good investment!

ACCOMMODATIONS

SUMMER HOUSE PARK

www.summerpark.ca

1-800-265-5557, Resort family camping/ cottages. Spacious sites on Miller Lake, five-star children's activities/amenities, sandy beach, boats, wi-fi.

MILLER'S FAMILY CAMP

www.millersfamilycamp.com

519-795-7750, 108 Miller Lake Shore Rd, Miller Lake, Lakefront cottages, family atmosphere.

SCOTT BYERS

Dining & Shopping

Applewood Inn • 40 seat cafe overlooks the pier on Georgian Bay www.applewoodinn.net • Serving fresh local, Swiss and international	519-795-7558	967 Dyers Bay Rd Miller Lake
Cedar Country Furniture • Rustic or plain handcrafted, white cedar www.cedarcountryfurniture.ca • Tables, chairs, bedroom suites & more	519-534-1692	588 Claude St Wiarton
Ferndale Drive-In - F.D.I. - Deli Restaurant • Great subs - smoked meats, Grilled favourites	519-793-3311	2867 Highway 6 Ferndale
Handicraft House Trading Post • Open all year www.hhtradingpost.com • Artwork, handicrafts in a unique heritage building	519-534-1777	766 Highway 6 North of Wiarton
Hellyer's Foodland • Gifts and more upstairs in Grandad's Attic • Groceries, meat, produce, bake shop & deli	519-793-3415	7 Webster St Lion's Head
Lion's Head Inn • Four season inn, restaurant & pub www.lionsheadinn.ca	519-793-4601	8 Helen St Lion's Head
Peacock's Foodland • Bakery, Deli, Fresh Produce, Meat, Deli Sandwiches www.foodland.ca • Gluten-free products • Laundromat on-site	519-596-2380	9 Bay Street Tobermory

International Woodworking... Home of
CEDAR COUNTRY FURNITURE

Rustic or Plain Handcrafted
White Cedar Furniture

588 Claude St Wiarton • www.cedarcountryfurniture.ca • 519.534.1692

HANDICRAFT HOUSE
Trading Post

• Native Artistry • Homemade Preserves
• Blankets • Family Canadian Clothing
• Country Crafts & Collectibles

Open all year

Featuring the Essence of Bruce Peninsula
POPULAR SUNDAY MARKET FROM MAY - OCTOBER
5 miles N of Wiarton on Highway 6 519-534-1777 • hhtradingpost.com

Open all year

**PEACOCK'S
FOODLAND**

Deli • Produce • Meats • Groceries • Bakery
Laundromat

Featuring:
Gluten Free Products
Custom Cut Meat
Deli Sandwiches

ATM

Little Tub Harbour Tobermory 519-596-2380



NIKKI DODGE

Professional Services

Angela S. King-Myles, CPA, CMA • Accounting, Income Tax and Bookkeeping services	519-793-3333	88 Main St Lion's Head
The Fyre Place & Patio Shop • Promoting quality-built Canadian Products www.thefyreplace.com	519-371-2963	Highway 6 & 10 519-371-2963
Chesnut Park Real Estate Ltd, Gary Taylor, Broker www.greyandbrucerealestate.com • Residences & Cottages	519-378-4663	551 Berford St Wiarton
ReMax Grey Bruce Realty Inc, Barbara Dirckx • Residences & Cottages www.hans-barbara-dirckx.com • Vacant land & commercial	519-795-7400	8 Webster St Lion's Head
White's Garage • Complete auto service in the heart of the village	519-793-3327	74 Main St Lion's Head
Wiarton Home Building Centre • Hardware and building supplies www.wiartonhbc.com	519-534-2232	10189 Berford St Wiarton

Barbara Dirckx
Broker

Provides...
RE/MAX
Real Estate services
with **MAX**imum Results!

Grey Bruce Realty Inc., Brokerage. Locally Owned & Independently Operated
Barbara Dirckx 519-795-7400 bdirckx@amtelecom.net
8 Webster St. Lion's Head **www.barbaradirckx.com**

Gary Taylor
Broker

519-378-4663 direct
519-534-5757 office
garytaylor@bmts.com
www.greyandbrucerealestate.com

Serving Grey & Bruce Counties and the Bruce Peninsula including: Tobermory, Lion's Head, Sauble Beach, Wiarton & Owen Sound.

Count on Me for an outstanding client experience.

CHESTNUT PARK
INTERNATIONAL REAL ESTATE
CHESTNUTPARK.COM

WIARTON HOME BUILDING CENTRE

For all your Hardware and Building supplies

10189 Berford Street, Wiarton

519-534-2232 • Toll Free 1-800-265-3740 • Fax 519-534-0742

Also Visit the
Wiarton Home Decor Centre for all Your Flooring Needs.

Just 1 km south of the Home Building Centre

WHITE'S GARAGE
Established 1928

Automotive Maintenance and Repair

74 Main Street Lion's Head 519-793-3327

NAPOLEON

Hwy's 6 & 21 Springmount (Owen Sound) 519-371-2963

THE FYRE PLACE & PATIO SHOP
Since 1973

Napoleon Fireplaces
State of the Art
Technology & Craftsmanship

www.thefyreplace.com

Recreation & Outdoor Pursuits

Blue Heron Company • Glass bottom boat & other water tours www.blueheronco.com • 1-855-596-2999	519-596-2999	Little Tub Harbour Tobermory
Bruce Anchor Cruises • Glass bottom boat tours www.bruceanchorcruises.com • 1-800-591-4254	519-596-2555	7468 Highway 6 Tobermory
Bruce County Museum & Cultural Centre • A great family experience! www.brucemuseum.ca	866-318-8889	33 Victoria St N Southampton
Bluewater Travel & Tours • Packages • Tours • Reservations www.bluewatertravel.ca	1-888-534-2671	347 Frank Street Wiarton
Cornerstone Golf • 9/18 hybrid course; licensed patio & restaurant www.cornerstonegolf.ca • Introducing foot golf!	519-596-2332	7178 Highway 6 Tobermory
Lion’s Head Marina • Transient & seasonal slips, fuel, showers, etc www.northbrucepeninsula.ca • 519-793-3522 x222	(seasonal phone) 519-793-4060	Lion’s Head
Owen Sound Transportation Co • Chi-Cheemaun ferry service www.ontarioferries.com • 1-800-265-3163	800-265-3163	Tobermory
Tobermory Harbour • Transient & seasonal slips, fuel, showers, etc www.northbrucepeninsula.ca • 519-793-3522 x222	(seasonal phone) 519-596-2731	Tobermory



NIKKI DODGE



BRENDA TITHECOTT



CORNERSTONE GOLF CLUB



Lighthouses appeal to us naturally. Their lights beam out into the darkness, guiding the way, keeping us off the rocks. Their keepers and their families dedicated themselves in lonely isolation to keep the lights shining, no matter what, and sometimes to risk their own lives in deeds of heroic rescue.

There are many lighthouses on the Peninsula including one on Flowerpot Island, Lion’s Head harbour, Knife Island-Lyall Island near Stokes Bay (accessible by small boat in favourable weather), Neyaashiinigaamiing (Cape Croker, accessible by road through First Nations land), Cove Island (visible from the ferry as it leaves Tobermory), Griffith Island (no access, but visible from the water), and on the west side of Big Tub Harbour at Tobermory.





REG PHILLIPS



NIKKI DODGE



CALE BEST

COTTAGE & CABIN MEMBERS



LARRY DAVIDSON

		Number of Units	Water/Beach/Pool	Wheelchair Access	Fireplace/Firepit	Air Conditioning	Wifi	Pets Accepted	Reservations/Req'd	Credit Cards Accepted	Open All Year
Bel Air Cottages & Motel www.saublebeachrentals.ca <i>Family friendly, close to all amenities</i>	519-422-1051 328 Main St Sauble Beach	12			✓			✓	✓	✓	
Cedar Grove Camp www.cedargrovecampskylake.com <i>Quiet, quaint retreat, cabins, camping, boats</i>	519-534-1927 264 Red Bay Rd South Bruce	6	W					✓	✓	NO	
Miller's Family Camp & Cottages www.millersfamilycamp.com <i>Lake-front housekeeping cottages, family atmosphere</i>	519-795-7750 108 Miller Lake Shore Rd Miller Lake	13	B		✓			✓	✓	NO	
North Shore Bungalows www.northshorebungalows.com <i>An ideal place to relax or launch your outdoor adventure !!</i>	519-422-1462 107 2nd Ave N Sauble Beach	5	P			✓			✓		
Restawhile Cottage www.brucepeninsularentalcottage.com <i>3-bedroom water view cottage</i>	519-795-7712 96 Symon Ave Red Bay	1	W/B		✓				✓	✓	
Tobermory Village Campground www.tobermoryvillagecamp.com <i>150 sites, campground & cabins</i>	519-596-2689 7159 Hwy 6 Tobermory	22		✓	✓		✓		✓	✓	

✱ Smoking is prohibited indoors in any accommodator in this Guidebook, as per the Smoke-Free Ontario Act

328 Main St.
Sauble Beach
519-422-1051

Cottages & Motel
sauble beach

www.saublebeachrentals.ca

1-519-422-1462

YOUR PLACE TO STAY IN COMFORT
Deluxe Accommodations. Modern Furnishings.
Private Patios. Cable TV. Heated Pool. Hot Tub.
Gas BBQ. Air Conditioned Units.

NorthShore@Sympatico.ca • NorthShoreBungalows.com
107 2nd Avenue North, Sauble Beach



PARKS CANADA

CAMPGROUND MEMBERS

		Water/Pool/Beach	2 and/or 3 PT hookups	Dumping Station	Firepits	Store	Showers	Laundromat	Pets Accepted	Reservations/Req'd	Credit Cards Accepted	Open All Year
Cape Croker Park (Neyaashiinigaaming) www.capecrokerpark.com <i>First Nations, 315 sites</i>	519-534-0571 112 Park Rd Cape Croker	B	2	✓	✓	✓	✓	✓	✓	✓	✓	
Happy Hearts Tent & Trailer Park www.happyheartspark.com <i>130 sites, campground, cabins</i>	519-596-2455 93 Cape Hurd Rd Tobermory	P	✓		✓	✓	✓	✓	✓	✓	✓	
Lakeside Camp www.lakesidecampinc.com <i>50 sites, family camping on Lake Huron</i>	519-793-3414 199 Burma Rd West of Ferndale	P	✓	✓	✓	✓	✓	✓	✓	✓	✓	
Lion's Head Beach Campground www.northbrucepeninsula.ca <i>43 sites, playground, picnic shelter</i>	519-793-3522 X222 Lion's Head	B	✓	✓	✓		✓		✓	✓	✓	
Roth Park www.rothparkfamilycamping.com <i>127 sites, campground on Berford Lake, North of Wiarton</i>	519-534-0145 102 Parkside Ave South Bruce	B	2	✓	✓	✓	✓	✓	✓	✓	✓	
Summer House Park www.summerhousepark.ca <i>235 tent/RV sites, cafe, BBQ, cottage rental, gift shop, restaurant</i>	519-795-7712 197 Miller Lake Shore Rd Miller Lake	B	✓	✓	✓	✓	✓	✓	✓	✓	✓	
Tobermory Village Campground www.tobermoryvillagecamp.com <i>150 sites, campground & cabin rental</i>	519-596-2689 7159 Hwy 6 Tobermory	P	✓	✓	✓	✓	✓	✓	✓	✓	✓	
Woodland Park www.woodlandpark.on.ca <i>730 sites, campground, childrens activities</i>	519-422-1161 47 Sauble Falls Pkwy Sauble Beach	P	✓		✓	✓	✓	✓	✓	✓	✓	

* Smoking is prohibited indoors in any accommodator in this Guidebook, as per the Smoke-Free Ontario Act



KELSEY DICKINSON



LION'S HEAD CAMPING

Camp on beautiful Isthmus Bay! Full-service park with tent & trailer camping next to sandy Lion's Head Beach.
519-793-3522 x222 www.northbrucepeninsula.ca
Search for "campground" on our website



- Campground
- Water, electric & sewer
- Showers, flush toilets
- In-ground swimming pool
- Recreation Building
- Camp store & snack bar
- Mini golf & WIFI friendly
- Camping cabin

#93 Cape Hurd Road, Tobermory, Ontario NOH 2R0
Phone: 519-596-2455 • www.happyheartspark.com



TOBERMORY VILLAGE CAMPGROUND & CABINS

- Quiet family camping • Full hook-ups
- Pull-thrus • Tent sites • Cabins
- Swimming pool • Playground
- Clean washrooms & showers
- Camp store • Laundry
- Night patrolled • Free internet
- Close to national parks, glass bottom boat tours & many other attractions!

519-596-2689
7159 Hwy. 6 Tobermory
contact@tobermoryvillagecamp.com
online at www.tobermoryvillagecamp.com

LAKESIDE CAMP

Relax at our beautiful, quiet, family campground situated on 40 acres of natural forest along Lake Huron.

199 Burma Rd, Lion's Head, Ontario
519-793-3414
www.lakesidecampinc.com



- Trailer Life Rated: 10/10*/10
- 730 Spacious Sites, Full Hook-ups
- 13 Drive Thru Sites with 50 Amp. service
- Cable TV, Phone & Internet Access
- Available On Sites

INDOOR HEATED POOL & WHIRLPOOL

*Rec Hall *Store & Propane *2 Laundromats
*2 Playgrounds *Planned Children's Activities

5 minute walk to Sandy Beach & Downtown Sauble Beach
1 ½ blocks north of lights
47 Sauble Falls Parkway, Sauble Beach, NOH 2G0
OFFICE HOURS 8:30 am - 10 pm

519-422-1161
www.woodlandpark.on.ca

REC. Woodall Rated FAC.
 



- Open May to Thanksgiving • Seasonal sites available • Propane refill station
- New playground • Connections to Bruce Trail • Hydro • Showers • Flush toilets
- Laundromat • Canoe rentals

519 534 0571 capecrokerpark.com Take Bruce County Rd 9 (2.5 km N of Wiarton) & follow the signs

OWNED AND OPERATED BY THE CHIPPEWAS OF NAWASH



BED & BREAKFAST
MEMBERS

		Rooms, En-suite	Wheelchair Access	Deck/Patio	Air Conditioning	Wifi	Fireplace/Firepit	Pets Accepted	Reservations/Req'd	Credit Cards Accepted	Open All Year
The Highland Manor Inn Grand Victorian B&B www.highlandmanor.ca <i>Grand Victorian manor, in the grand Victorian manner</i>	519-372-2699 867 4th Ave 'A' West Owen Sound	4		✓		✓	✓		✓	✓	✓
Lionheart Guest House and B&B www.lionheartguesthouse.com <i>Charming historic home situated centrally in Lion's Head</i>	519-793-3325 87 Main St Lion's Head	7	✓	✓		✓			✓	NO	✓
MellowOut B&B www.mellowoutbb.com <i>Tranquil cedar bush setting, centrally located, Dutch spoken</i>	519-793-4646 391 Pike Bay Rd Pike Bay	3		✓		✓	✓		✓	✓	✓
Summer House Park www.shorelinebb.ca <i>Resort, B&B, campground, gift shop & restaurant</i>	519-795-7712 197 Miller Lake Shore Rd Miller Lake	3		✓	✓	✓	✓	✓	✓	✓	



Lion's Head Beach Motel And Cottages

On The Beach Overlooking The Harbour

EASY ACCESS TO HIKING, BIKING & WINTER SPORTS TRAILS

Extra Large Units With Kitchens

UNDER NEW OWNERSHIP

www.lionsheadbeachmotelandcottages.ca

1 McNeil Street, Box 328, Lion's Head. ON NOH 1W0

Ph: 519-793-3155 ext 111

circa 1879

LION'S HEAD INN RESTAURANT & PUB

Rooms, Outdoor Patio, AGCO, Daily Specials

8 Helen St., Lion's Head, 519-793-4601, lionsheadinn.ca

CAFE, RESTAURANT & ACCOMMODATIONS

967 Dyers Bay Rd, Miller Lake, ON

p: 519-795-7558

e: info@applewoodinn.net

www.applewoodinn.net

Relaxed casual dining, overlooking Georgian Bay

Serving fresh, local, and organic produce

LICENSED under A.G.C.O



MOTEL, INN & RESORT
MEMBERS

		No. of Rooms	No. of Cottages/Cabins	Water/Beach/Pool	Dining Room/Licensed	Air Conditioning	Wifi	Wheelchair Access	Pets Accepted	Reservations/Req'd	Credit Cards Accepted	Open All Year
Applewood Inn www.applewoodinn.net <i>Overlooks the pier on Georgian Bay</i>	519-795-7558 967 Dyers Bay Rd. Miller Lake	2	3	W/B P	✓		✓			✓	✓	✓
Bel Air Cottages & Motel www.saublebeachrentals.ca <i>Family friendly, close to all amenities</i>	519-422-1051 328 Main St Sauble Beach	4	12						Ask	✓	✓	
Bruce Anchor Motel & Cottages www.bruceanchor.com <i>Motel, cottages, glass-bottom boat tours</i>	519-596-2555 7468 Hwy 6 Tobermory	37	7	W		✓	✓	✓		✓	✓	
Lion's Head Beach Motel & Cottages www.lionsheadbeachmotel.com <i>Right on the beach, near the harbour</i>	519-793-3155x111 1 McNeil St Lion's Head	9	9	B			✓			✓	✓	✓
Lion's Head Inn www.lionsheadinn.ca <i>Four season inn, restaurant & pub</i>	519-725-4601 8 Helen St Lion's Head	3			✓				✓	✓	✓	✓

✱ Smoking is prohibited indoors in any accommodator in this Guidebook, as per the Smoke-Free Ontario Act



FESTIVALS & EVENTS

- Bruce County Tourism
www.explorethebruce.com
- Grey County Tourism
www.visitgrey.ca
- Regional Tourism Area 7
www.brucegreysimcoe.com
- Georgian Bluffs
www.georgianbluffs.on.ca
- Northern Bruce Municipality
www.northbrucepeninsula.ca
- South Bruce Peninsula
www.southbrucepeninsula.com
- Wiarton
www.visitwiarton.ca
- Lions Head
www.visitlionshead.ca
- Sauble Beach
www.saublebeach.com
www.visitsaublebeach.ca
- Tobermory
www.tobermory.org
- Owen Sound
www.owensoundtourism.ca

JANUARY & FEBRUARY

Winterfest, Sauble Beach
60th Anniversary Wiarton Willie Festival

MARCH

Maple Magic, Oxenden
Regal Point Elk Farm
Georgian Bluffs
Purple Valley
Maple Syrup Festival

APRIL & MAY

Spring Birding AGM BPBO
Sources of Knowledge
Forum, Tobermory
Annual Gathering of the
Friends of Cabot Head
BPSA Spring Fishing Derby

JUNE

Bruce Peninsula Orchid Festival
Bruce-Manitoulin Passage Ride
Regal Point Amazing Race
4th Annual Scrub the Tub
Chi Cheemaun Weekend
BPTA Yard Sale Trail
For more Info call:
Ferndale Information Centre.
Various Locations around the Peninsula
BPEG Yard Sale,
Lion's Head

JULY

Harbourside Music, Lion's Head Harbour
Bayside Astronomy POD Lions Head
Fridays & Saturday at
Dusk, Lion's Head Harbour
Canada Day
Peninsula Wide Events
Bruce Peninsula Art Show
Wiarton Rotary Fair
Lions Head Homecoming

AUGUST

Shore to Shore Race
Sauble Beach Sandfest
Cape Croker Pow Wow
Bruce Peninsula
Multisport Race

Owen Sound Salmon
Spectacular

Bruce Peninsula Artists Studio Tour

SEPTEMBER & OCTOBER

Sept Fall Fair, Wiarton

NOVEMBER & DECEMBER

Remembrance Day Ceremonies
Festival of Lights,
Owen Sound
Santa Claus Parades,
Peninsula-wide

For more events and information please go to the website
www.brucepeninsula.org and check out our facebook page for more events!
www.facebook.com/BrucePeninsulaTouristAssociation/

NIKKI DODGE

CHI-CHEEMAUN SCHEDULE

1-800-265-3163



May 5 – June 15 Off-Peak Fares Apply

DEPART DAILY: Tobermory	ARRIVE: South Baymouth	DEPART DAILY: South Baymouth	ARRIVE: Tobermory
8:50 am	10:50 am	11:10 am	1:10 pm
1:30 pm	3:30 pm	3:50 pm	5:50 pm
6:10 pm (Fri. only)	7:55 pm (Fri. only)	8:15 pm (Fri. only)	10:00 pm (Fri. only)
Additional Sailing: Victoria Day Holiday, Mon. May 22			
6:10 pm	7:55 pm	8:15 pm	10:00 pm

June 16 – September 4 On-Peak Fares Apply

DEPART DAILY: Tobermory	ARRIVE: South Baymouth	DEPART DAILY: South Baymouth	ARRIVE: Tobermory
7:00 am	8:45 am	9:10 am	10:55 am
11:20 am	1:05 pm	1:30 pm	3:15 pm
3:40 pm	5:25 pm	5:50 pm	7:35 pm
8:00 pm	9:45 pm	10:00 pm	11:45 pm

September 5 – October 15 Off-Peak Fares Apply

DEPART DAILY: Tobermory	ARRIVE: South Baymouth	DEPART DAILY: South Baymouth	ARRIVE: Tobermory
8:50 am	10:50 am	11:10 am	1:10 pm
1:30 pm	3:30 pm	3:50 pm	5:50 pm
6:10 pm (Fri. only)	7:55 pm (Fri. only)	8:15 pm (Fri. only)	10:00 pm (Fri. only)
Additional Sailing: Thanksgiving Holiday, Mon. Oct. 9			
6:10 pm	7:55 pm	8:15 pm	10:00 pm

TRAVEL IN GOOD SPIRITS



ChiCheemaun.com

Ontario
An Agency of the
Province of Ontario

Owen Sound
Transportation
Company. Est. 1921



Northern Bruce Peninsula

It's time to discover our paradise.

KELSEY DICKINSON

Home of the Fathom Five National Marine Park, Bruce Peninsula National Park, the Bruce Trail, Lion's Head Nature Reserve, First Nations Hunting Reserves and a large Bruce County Forest Tract.

COMMUNITIES

Lion's Head
Ferndale
Tobermory
Stoke's Bay
Pike Bay
Barrow Bay

AREA HIGHLIGHTS

Bruce Trail
Fishing
Lighthouses
Picturesque Harbours
Shopping
Star Gazing
Diving
Flowerpot Island
Beaches
Museum

DISCOVER US

Where to begin, what to see, what to do...
do you enjoy diving, sight seeing, walking,
hiking, shopping, dining, viewing, relaxing,
golfing, swimming? It's time to discover our
paradise...the Bruce Peninsula!

Municipality of Northern Bruce Peninsula

56 Lindsay Road 5, R.R. #2, Lion's Head, Ontario N0H 1W0

Telephone: 519-793-3522 • Fax: 519-793-3823

Website: www.northbrucepeninsula.ca

